

The Enterprise Cloud



Petr Kolda

21.4.2010

Petr.kolda@simac.cz

simac



How is Enterprise Cloud offered?

➤ Cloud Locations

- Miami (Florida), Culpeper (Virginia), USA
- Amsterdam, The Netherlands



Bundles include

- Collocation and Power in a Terremark Data Center
- Highly Available Network Infrastructure
- Highly Available Firewall w/ VPN connectivity
- Highly Available Load Balancers
- Highly Available Computing Hardware & Software
- Infinicenter Portal
- 99.9% SLA on Infrastructure
- 99.5% SLA on Infinicenter Application



Bundles include



➤ **Computing Resource Pools - Bundle**

- 5GHz, 10GB Proc/Mem. Resource Pool
- 10GHz, 20GB Proc/Mem. Resource Pool
- 25GHz, 50GB Proc/Mem. Resource Pool
- 50GHz, 100GB Proc/Mem. Resource Pool
- Incremental Computing Resource Pool Upgrade: 1GHz, 2GB Proc/Mem.

➤ **Dynamic Resource Allocation on CPU and Memory** (Bursting Mode / pay as you use) (Sampling on 5 minute bases)

➤ **Storage**

- 100GB Storage Resource Pool
- 250GB Storage Resource Pool
- 1000GB Storage Resource Pool



Bundles include



➤ Network Resource Pools included in the Bundle

- Active/Passive Virtual Firewall (50Mbps Max)
- Active/Passive Utility Load Balancer (50Mbps Max)
- 1 Mbps troughput (Average month utilizitation)
- 5 Public IP Address

➤ 2 VLAN's:

- DMZ (/27): 30 Private IP Addresses (27 Usable)
- INT (/28): 14 Private IP Addresses (11 Usable)

➤ 2 Client-to-LAN VPN Accounts



Bundles include



➤ **Optional Network Resources (additional fees apply):**

- 1 LAN-to-LAN VPN Termination Point (1Mbps Max)
- Additional Client-to-LAN VPN Accounts
- Additional Public IP Addresses (5, 10, or 25 IP's)
- Additional Private IP Subnets and VLAN's will be evaluated on a case by case basis
- Burstable Bandwidth

➤ **Backup Resource Pools**

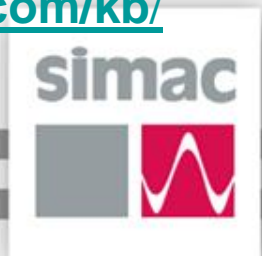
- SATA Backup Disk Storage
- 100GB Storage Resource Pool
- Backup License Credits (1 year term per backup license credit)
- 2 Credits required per standard file backup / **3 Credits required for Microsoft SQL or Microsoft Exchange Hot backups**



Supported Operating Systems



- Microsoft Windows 2003 Standard Server (x86/x64)
 - Microsoft Windows 2003 Enterprise Server (x86/x64)
 - Microsoft Windows 2008 Standard Server (x86/x64)
 - Microsoft Windows 2008 Enterprise Server (x86/x64)
 - Solaris 10 x64
 - CentOS 5.2 (x86/x64)
 - Red Hat Enterprise Linux 5.2 (x64)
 - SUSE Linux 10 (x64)
 - Ubuntu 8.04 LTS (x86/x64)
 - FreeBSD 7.0 (x86)
 - **Customized OS loaded by Customer as ISO image**
- **Online knowledge base:** <http://support.theenterprisecloud.com/kb/>



Security

- On the Cloud customers deploy virtual machines which contain their own OS instances with unique username and passwords defined by the end user.
- Their data will reside on a shared SAN but can only be accessed through their virtual machines as defined by the end user. Every Cloud environment is placed behind a unique firewall instance with rule sets managed but the end user.
- Customer's virtual machines are deployed in private subnets and can only be accessed over a secure VPN connection for remote administration.
- If customers are looking for advanced security services we also have Multi-Factor Authentication and Intrusion Detection Services that can be offered. Also, the Terremark SIS team can be engaged to perform advanced security consulting or professional services



vCloud Express vs Enterprise Cloud



vCloud™ Express

VS



Enterprise Cloud™



PAY-AS-YOU-GO



V-CLOUD API
COMPATIBLE



GET STARTED WITH
A CREDIT CARD



SCALABLE
DEVELOPMENT
PLATFORM



DEDICATED
RESOURCE POOLS



INTEGRATION WITH
PRIVATE NETWORKS



COMPLETE
SECURITY SUITE



PHYSICAL
DEVICE INTEGRATION

simac



vCloud Express vs Enterprise Cloud

➤ vCloud Express

- No minimum commitment
- Public network only
- Single security context
- Shared computing pool
- Random location (Patriot Act!)
- Non auditable
- Limited/no SLA
- No Support
- No predictable invoice
- Test/Development



vCloud Express vs Enterprise Cloud

➤ Enterprise Cloud

- Single shared network
- Top-tier datacenters
- Full Support by mail and phone
- Connectivity to 160 networks
- Enterprise-class servers
- High-performance FC SAN
- Fully clustered architecture
- vLAN segmentation
- Private compute pools
- Compliance ready
- Backed by resilient SLA's
- Hybrid Cloud capable

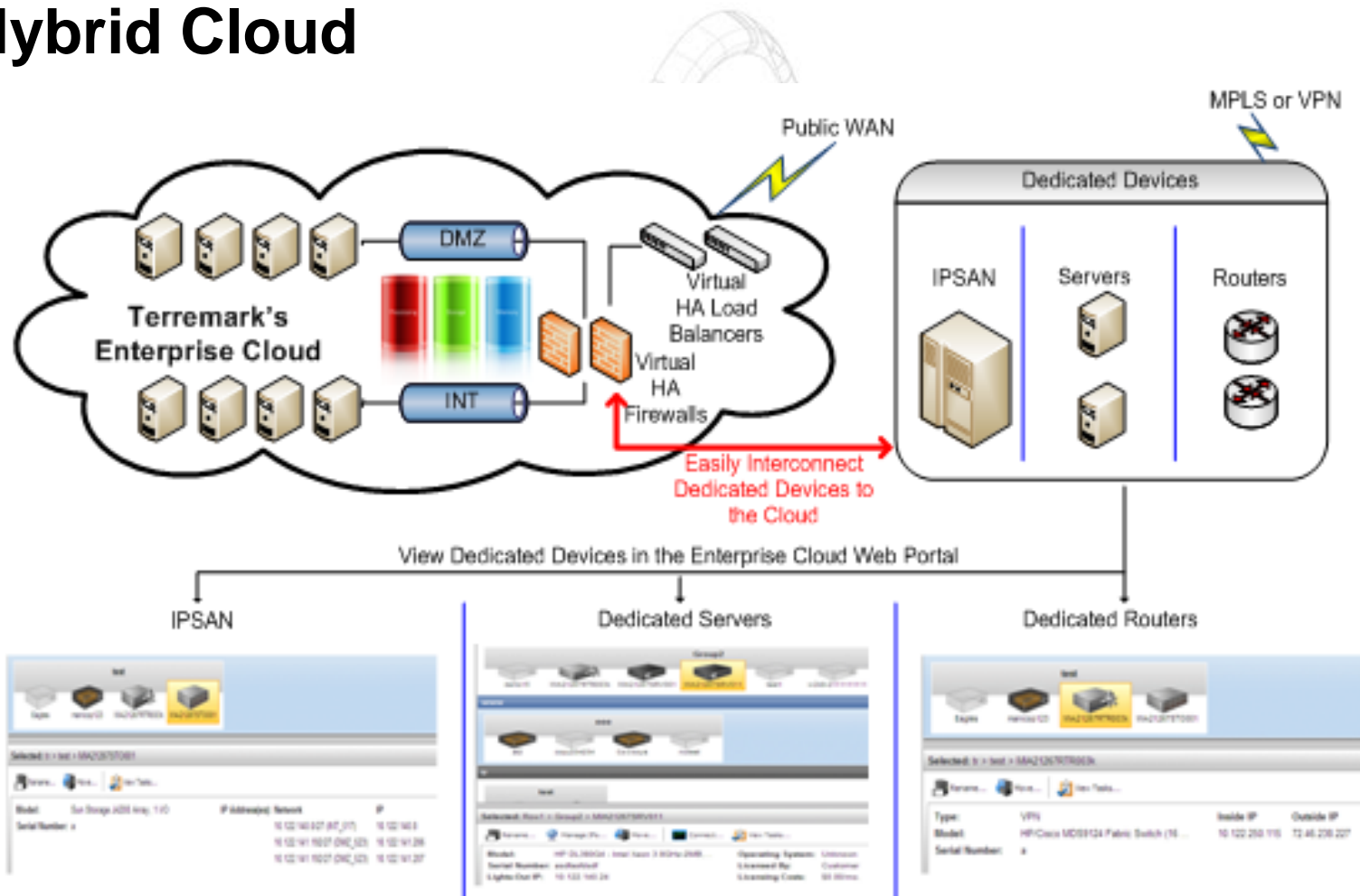


Hybrid Cloud

- Mix'n Match your datacenter with provider datacenter
 - E.g. web servers in the cloud, database server on premise/colocation
- VMware Based.
 - Easy to import/export VM's to virtually any "hardware"
 - New version of VMware to support internal as well as external resources form the same interface?



Hybrid Cloud

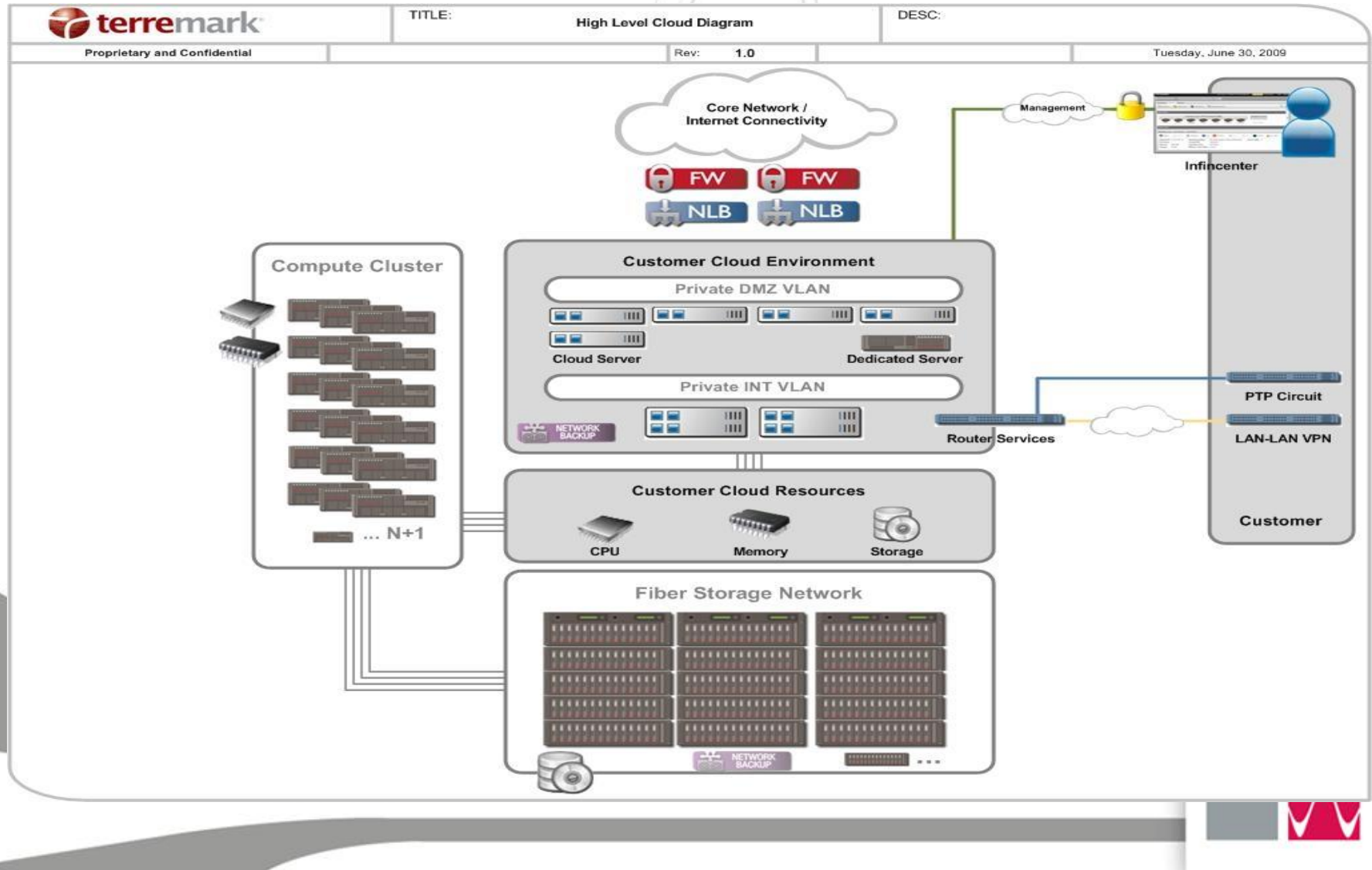


What are the Enterprise Cloud components?

- Cisco ASA55xx HA VPN gateway
- Citrix Netscaler HA Load Balancers
- Cisco 6509 HA Switches/FWSM Firewall
- Enterprise Class Servers, 4xquad core, 80GB RAM each
- Netapp (and others) Fiber Channel Storage
- HA Vmware 3.5U4
 - Q3/2010 vSphere
- Infinicenter: Web Portal developed in .NET APIs for Vcenter, Cisco, Citrix.
- Disk backup with data on SATA storage



What are the Enterprise Cloud components?



In Summary – Enterprise Cloud

- **Dynamic capacity management**
 - **Real-time deployment**
 - **Granular scalability**
 - **Better asset utilization**
 - **Server consolidation**
 - **Zero CapEx**
-

“By 2011, 80 percent of Fortune 1000 enterprises will pay for some cloud computing services.”



Infinicenter

➤ **Děkuji za pozornost**

➤ **Následuje ukázka administrátorského pro správu cloud
Infinicenter**

simac

